

# What is GDPR?

The **General Data Protection Regulation (GDPR)** (**Regulation (EU) 2016/679**) is a regulation by which the European Parliament, the European Council and the European Commission intend to strengthen and unify data protection for individuals within the European Union (EU).

## Why should companies focus on GDPR?

The general data protection regulation **is in force since 25 May 2018** and the GDPR establishes a tiered approach to data breach penalties which enables the supervisory authorities to **impose fines for some infringements of up to the higher of 4% of annual worldwide turnover.**

## What are the key points to retain?

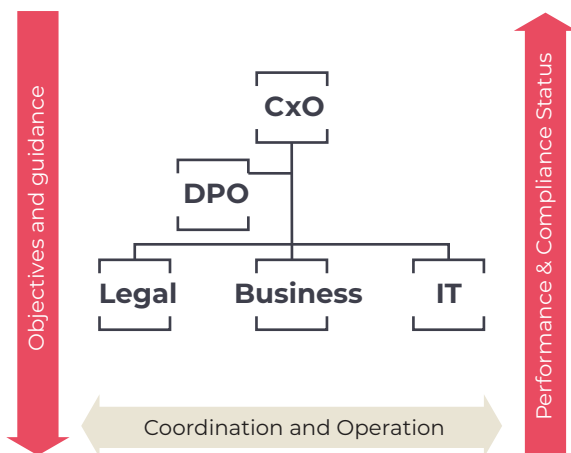
Some of the key points and obligations to consider include:

- **Appointing a Data Protection Officer;**
- **Responsibility and data protection by design and by default;**
- **Role of data controllers;**
- **Records of data processing activities and other procedures;**
- **Lawfulness of processing;**
- **Data Protection Impact Assessments;**
- **Notification of personal data breaches.**

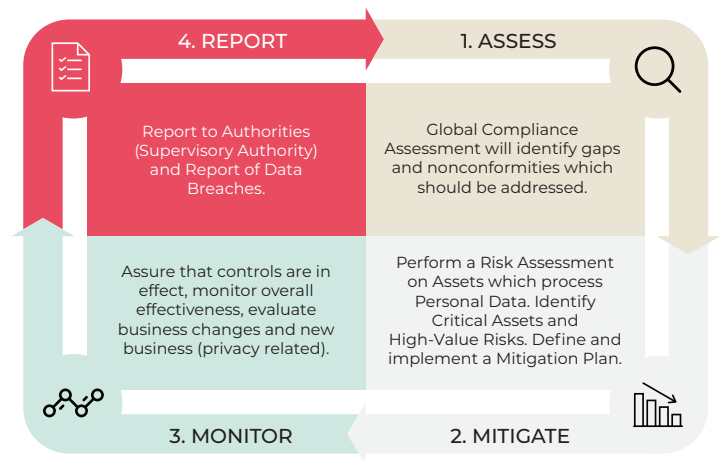
## How to maximize effectiveness and optimize processes?

The usage of tools can enhance the effectiveness and the efficiency of the adoption and operation of all the GDPR processes when supported by adequate tools. The adequate selection and usage of these tools will allow the organisations to support all the peers to contribute in an agile way and will reduce the effort on implementation and maintenance of operations and associated compliance evidence.

## Who needs to be on board?



## What are the key actions to comply?

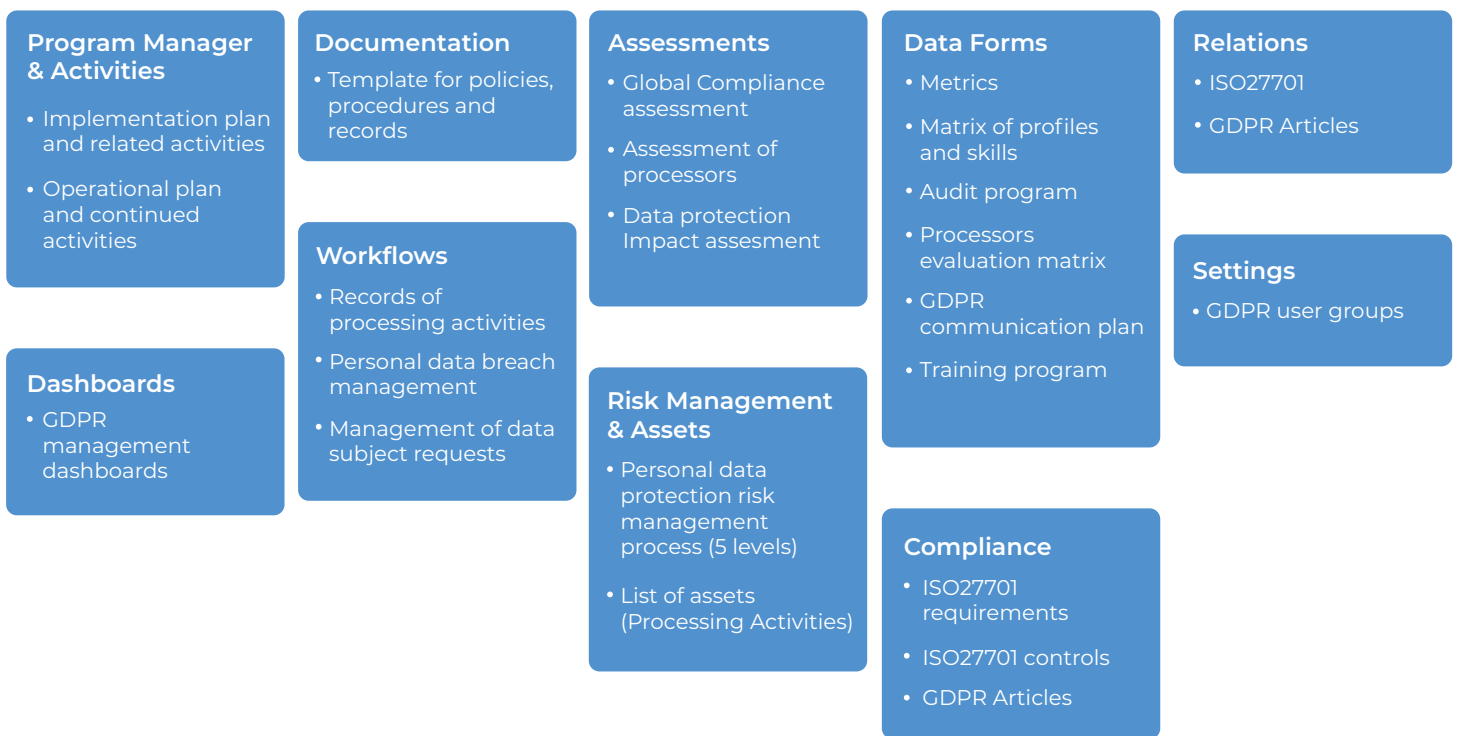


Find out how **IntegrityGRC** can help you

# IntegrityGRC Solution for GDPR compliance



## Specific resources for GDPR compliance management



**Request your demo now**  
[www.integritygrc.com](http://www.integritygrc.com)

**IntegrityGRC** is a set of tools that help organisations to manager their processes, risk and compliance in a structured way.

Present in 18 countries in the EMEA region

